

Fechamento de Arquivos



INDESING cs3



QUADRO - GENERAL

Print

Print Preset: [Custom] ▾
Printer: FUJI_Luxcel_F5600 ▾
PPD: FUJI_Luxcel_F5600 v3015.102 ▾

General

Setup
Marks and Bleed
Output
Graphics
Color Management
Advanced
Summary

General

Copies: 1 Collate Reverse Order

Pages

Pages: All
 Range: 1-10

Sequence: All Pages ▾


Spreads
 Print Master Pages

Options

Print Layers: Visible & Printable Layers ▾

Print Non-printing Objects
 Print Blank Pages
 Print Visible Guides and Baseline Grids

Save Preset... Setup... Print Cancel



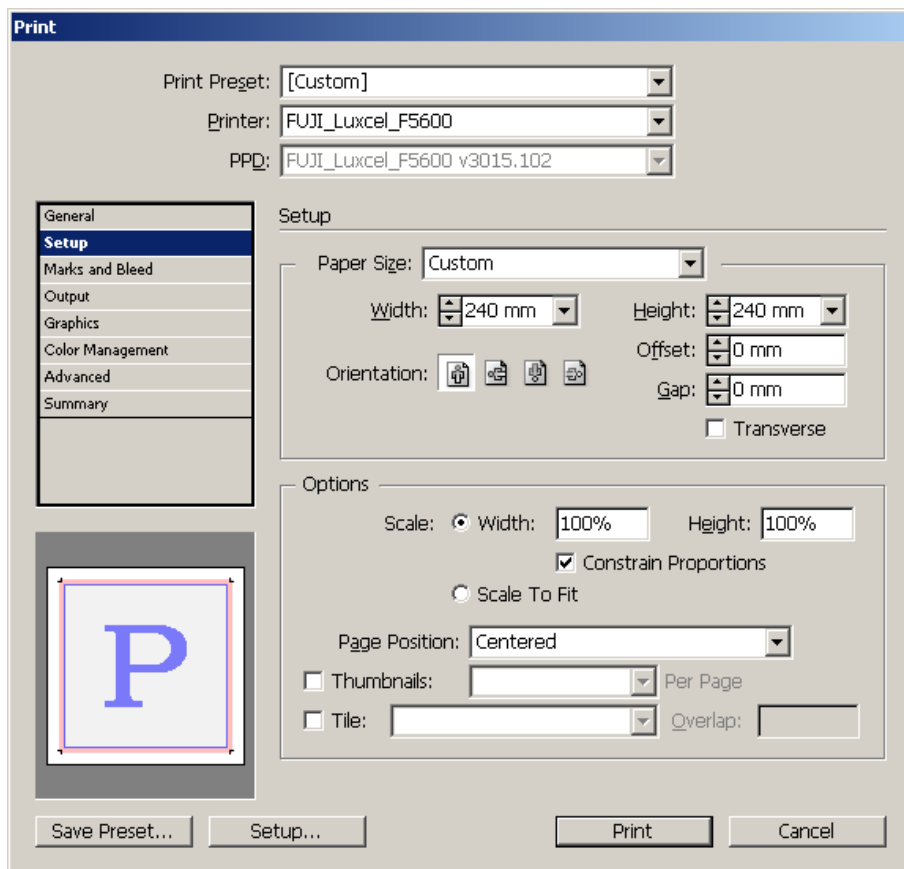
Print - Fuji_Luxcel_F5600.

PDD - (Fuji_Luxcel_F5600).

Spreads - Desmarque a opção.

Print Blank Pages - Marque essa opção.

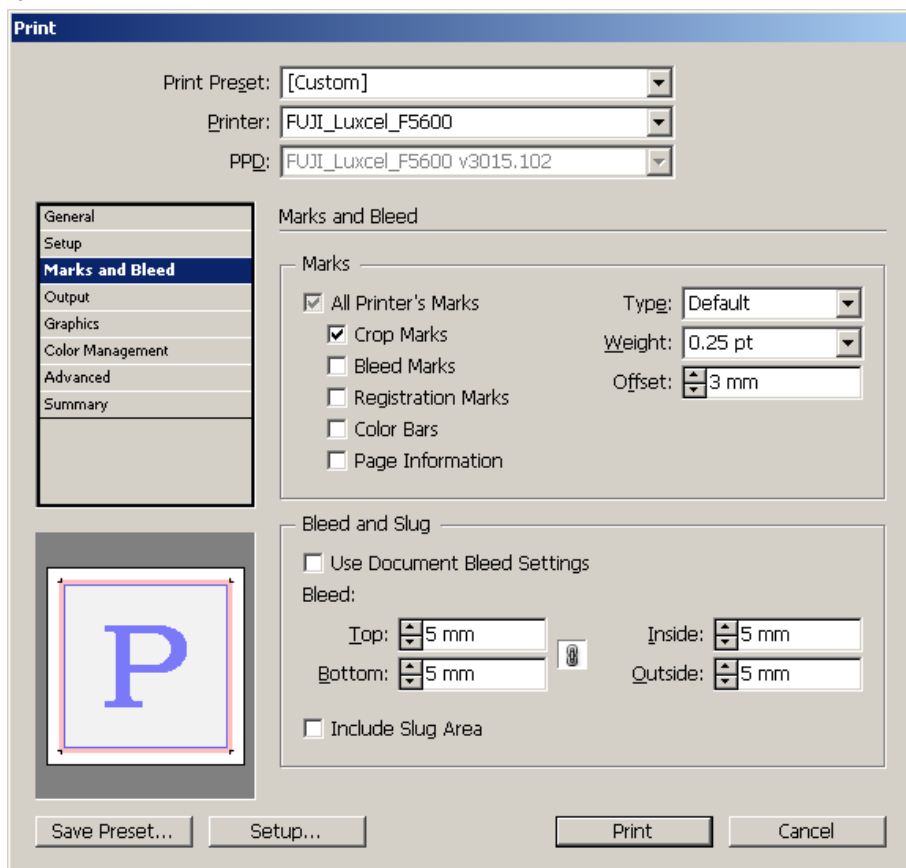
QUADRO - SETUP



Paper Size - Escolha o formato da página com acréscimo de 5 mm na largura e altura. Caso não encontre o formato desejado digite as medidas nos campos **Width** e **Height**.

Page Position
Escolha opção **Centered**.

QUADRO - MARKS & BLEED



All Printer's Marks:

Marque opção **Crop Marks** as outras opções deixe desmarcadas.

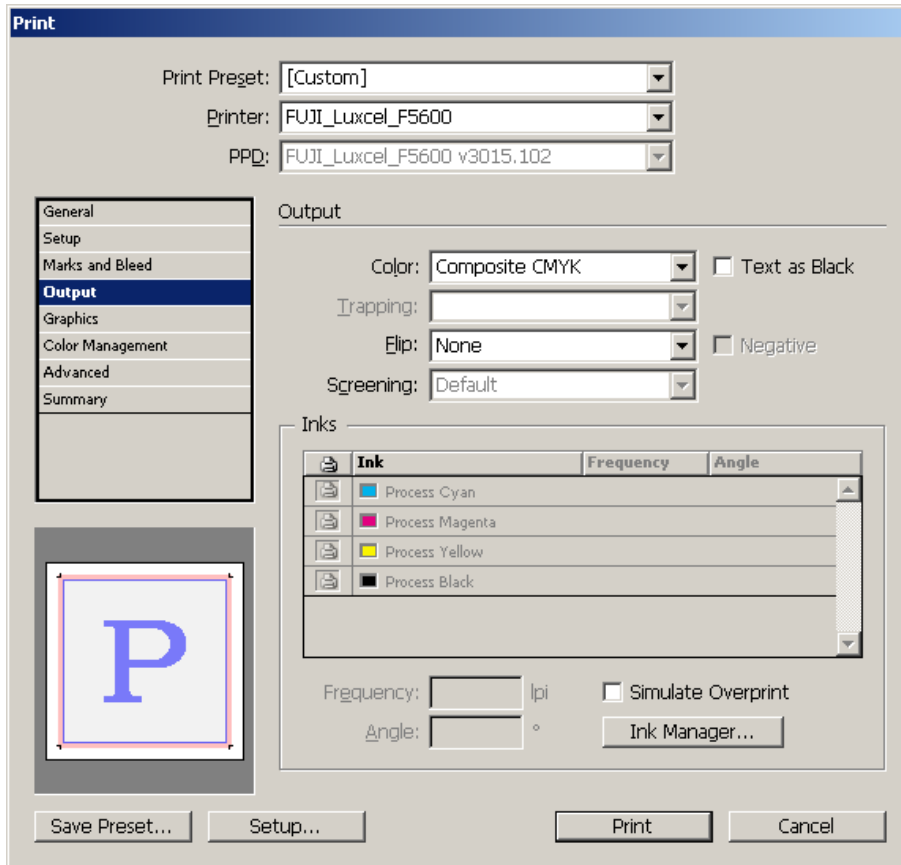
Offset: 3mm

Bleeds: = Sangria

Top: (5mm) Bottom: (5mm)

Left: (5mm) Right: (5mm)

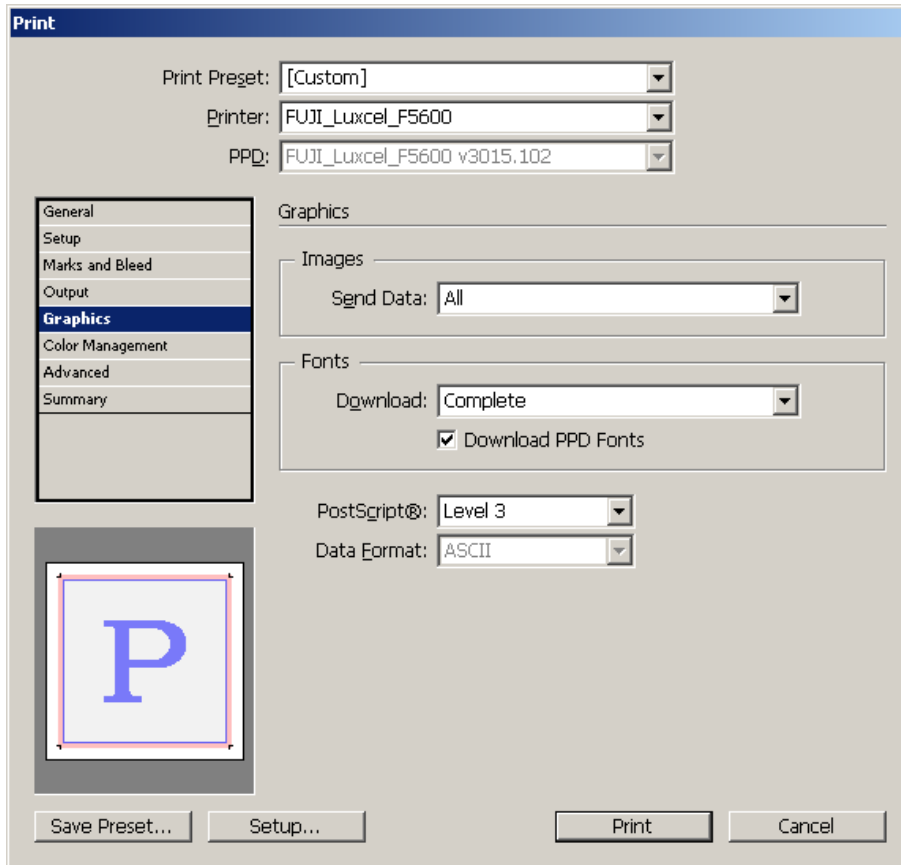
QUADRO - OUTPUT



Color - Composite CMYK

Flip: None

QUADRO - GRAPHICS

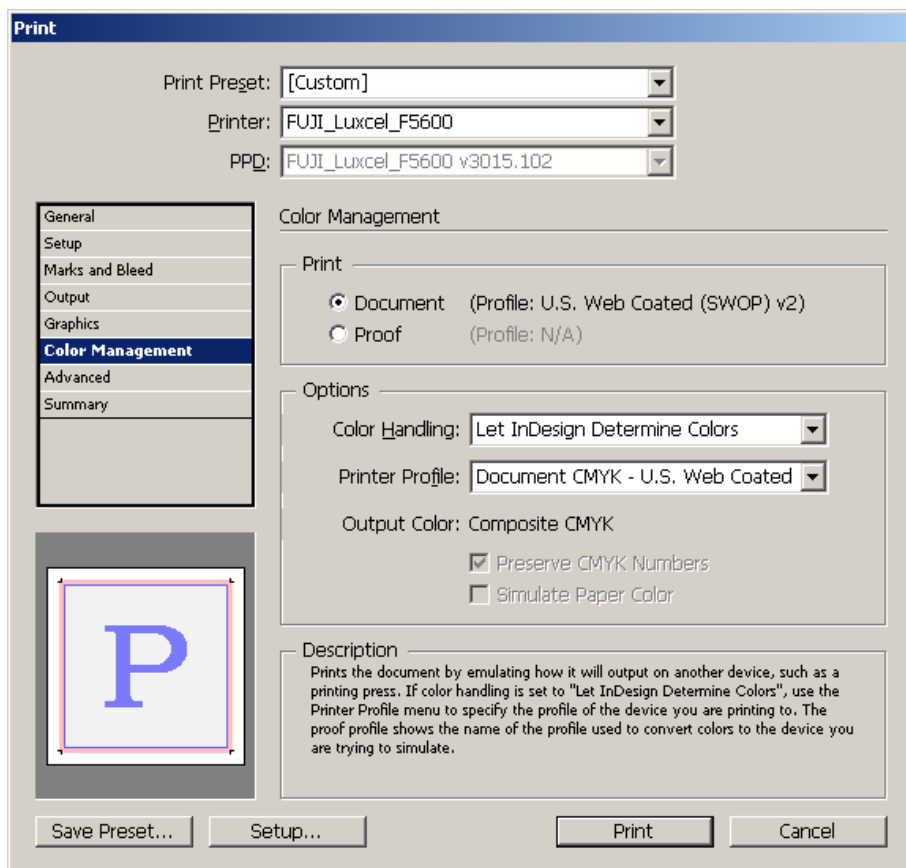


Send Data: All

Download: Complete. Marque a opção Download PPD Fonts.

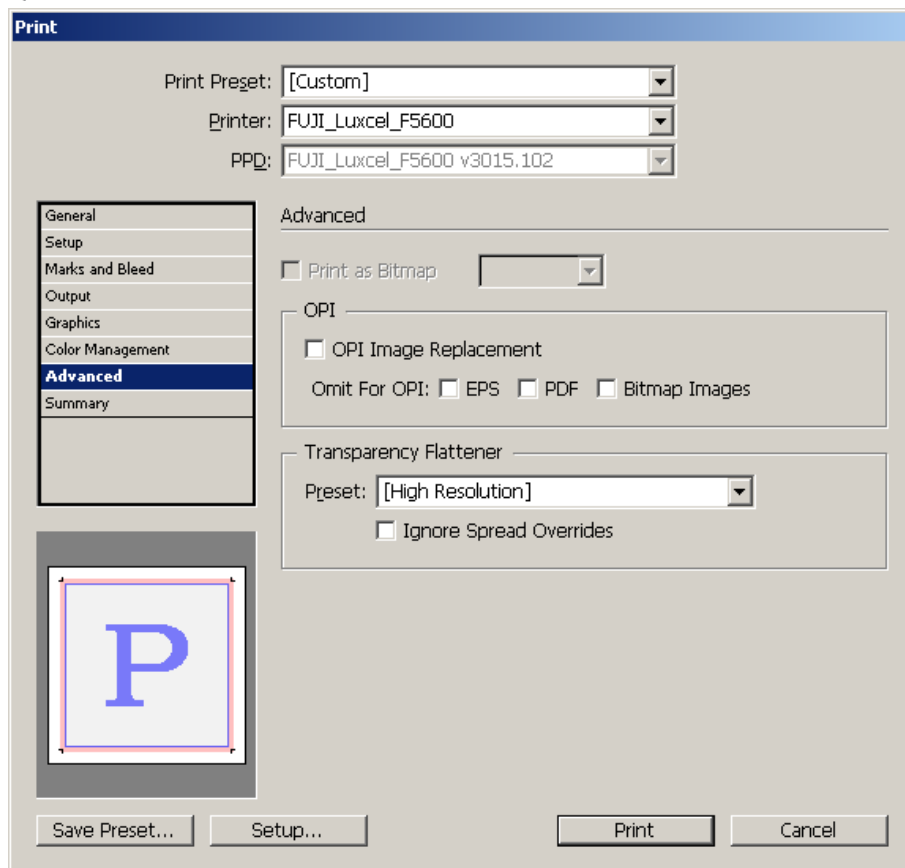
PostScript®: Level3.

QUADRO - COLOR MANAGEMENT



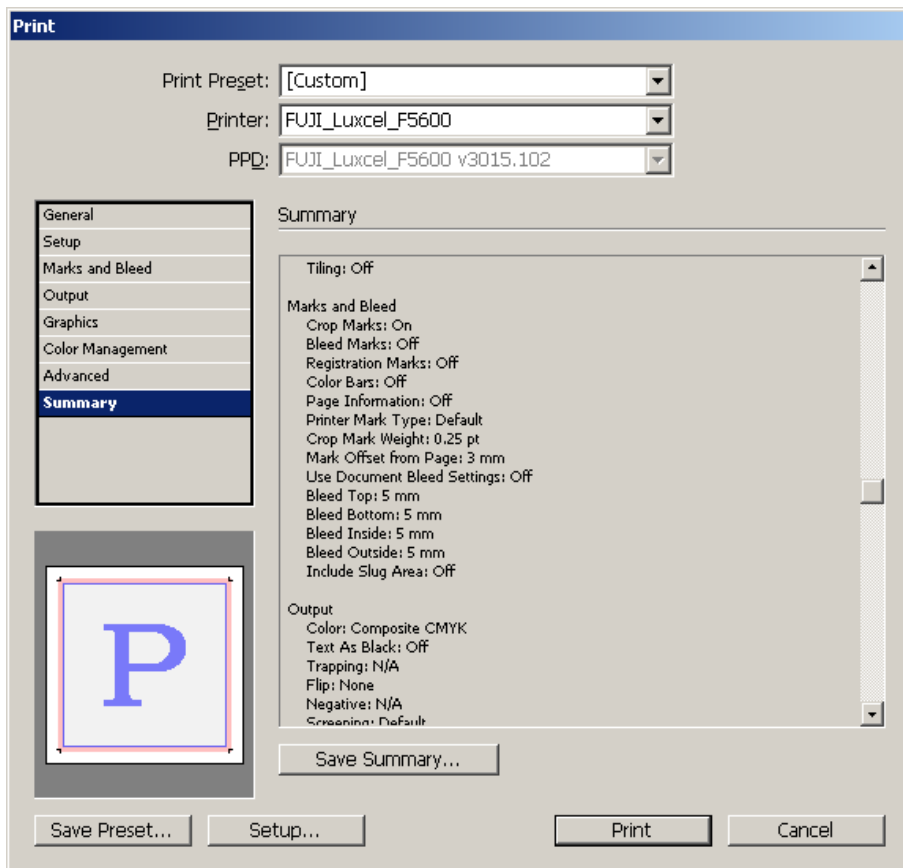
Nesta opção mantenha o esquema original do arquivo.

QUADRO - ADVANCED

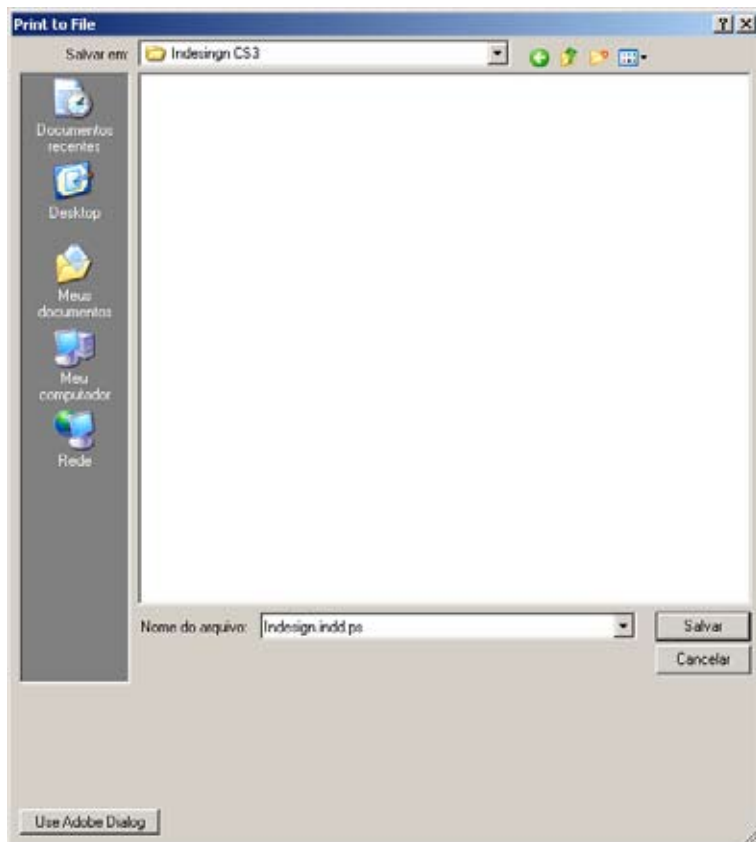


Preset: [High Resolution].

QUADRO - SUMMARY



Clique **Print** para gerar o arquivo (PostScript).



Direcione onde será salvo seu arquivo em (PostScript).

Fechamento de Arquivos



INDESING cs3

Exemplo: Arquivo Final, já com marca de corte e sangria.

